



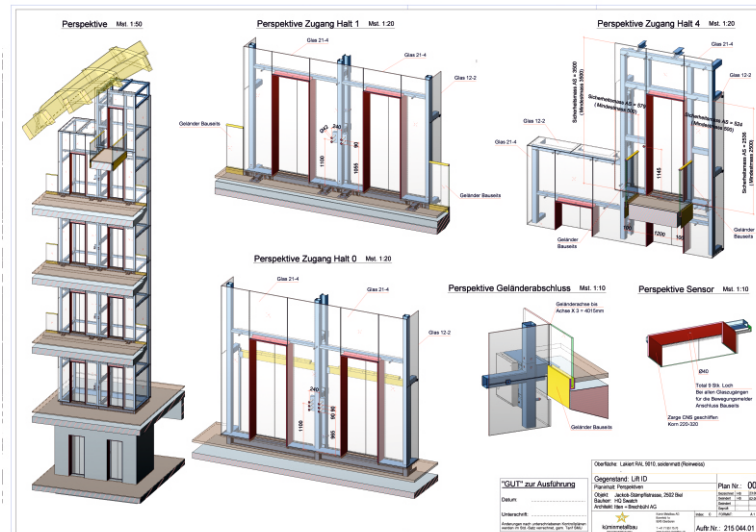
## Four companies trust in one CAD solution

### HiCAD in Use

As specialist for a wide diversity of industry solutions the ISD Group with its hybrid technology provides an opportunity for flexibly covering the whole production process in one system: 2-D and 3-D drawings, direct modelling and parametrics as well as PDM/PLM components. The modular CAD system works cross-sectorally from mechanical engineering to plant engineering or sheet metal processing, to turnkey solutions for steel engineering, glass, metal and facade engineering. It also makes it possible to freely combine its integrated industry solutions.

#### Kümin Metallbau AG

How multifaceted the use of HiCAD can be is proven by Kümin Metallbau AG. The family-run company realises general metal engineering constructions with the CAD solution of the ISD, e.g. elevator glazing, canopy constructions, staircases, railings or facades. Despite the fact that the company based in Oberbüren has only switched to HiCAD in August 2016, first results could be achieved in a minimum of time. "Thanks to the impeccable data output we could improve the production of workpieces notably since the implementation of HiCAD", says Hansjürg Schnetzer, project manager in the Kümin Metallbau AG. "HiCAD offers an extensive amount of functionalities, above all the saving of project-specific beams in the catalogue, which is not available in this



In the planning: The steel-glass elevator in the new building of the SWATCH headquarters in Biel SWATCH (Image: Kümin Metallbau AG)

#### » IN BRIEF

##### Kümin Metallbau AG

- Industry: Metal, Glass and Facade Engineering
- Software: HiCAD
- Services: Elevator glazings, canopies, gates, doors, conservatories, stairs, railings or facades
- Headquarter: Oberbüren, Switzerland
- [www.kuemin-metallbau.ch](http://www.kuemin-metallbau.ch)

form in any other library. For this purpose, 2-D data are required as cross section in order to create 3-D beams. The further processing of the beams is very easy due to its characteristics specified for steel engineering, e.g. mitre cut or trimming to edge or lengthening functions. This flexibility facilitates everyday work enormously", Hansjürg Schnetzer continues. Moreover, the automatic data transfer of measurement recordings from Flexijet 3D has happened quickly and without any losses for the Kümin Metallbau AG. Manual post-processings are

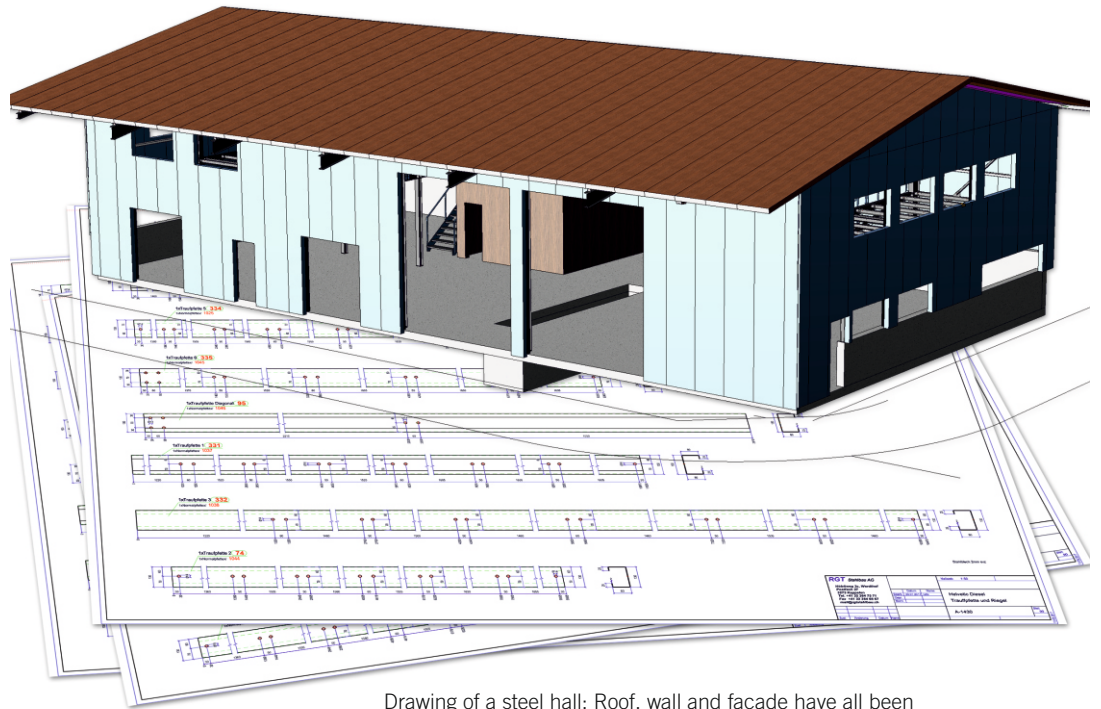
## KUNDENERFOLGE

avoided, thus time and costs are saved. As an all-round in the metal engineering the Künim Metallbau AG depends on a system with which you can adapt to your customers' wishes quickly and easily. "HiCAD's versatility has convinced us right from the start", says Hansjürg Schnetzer. "We can individually and

flexibly comply with our customers' needs. The cross-sectoral work in HiCAD helps us with that. We partly use complex sheet metal elements which we create with holes and cut-outs in HiCAD. The correct development happens at the push of a button. HiCAD automatically creates the right drawing with dimensioned blanks and generates all other production documents relevant for sheet processings and the transfer to our sheet metal suppliers.

### RGT Stahlbau AG

For the RGT Stahlbau AG the application focus lies on the production of complicated steel constructions. Here HiCAD especially supports the presentation and further processing of complex details: "Regarding bigger drawings HiCAD enables us to create a sectional view or detail view for a particular component and to continue working in this view. All changes are automatically applied to the 3-D drawing. As a consequence my co-workers and I can draw even more accurately at difficult spots, thus avoid mistakes or imprecision right from the beginning",



Drawing of a steel hall: Roof, wall and facade have all been created in HiCAD (Image: RGT Stahlbau AG)

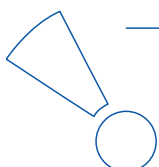
explains Roland Gerber, owner of the RGT Stahlbau AG.

The steel engineering company based in Kappelen has been counting on the cross-sectoral CAD solution ISD for over seven years. Drawing with HiCAD is part of the day-to-day business of the RGT. The CAD solution especially convinces with its abundance of connections specifically for steel engineering: "Additionally, we create a dimensioned cutting as a DXF file of all sheets in a drawing with HiCAD and we

### » IN BRIEF

#### RGT Stahlbau AG

- Industry: Steel and Metal Engineering, Metalworking shops
- Software: HiCAD
- Services: Bridges, halls, parkings, doors, railings, balconies
- Headquarter: Kappelen, Switzerland
- [www.rgststahlbau.ch](http://www.rgststahlbau.ch)



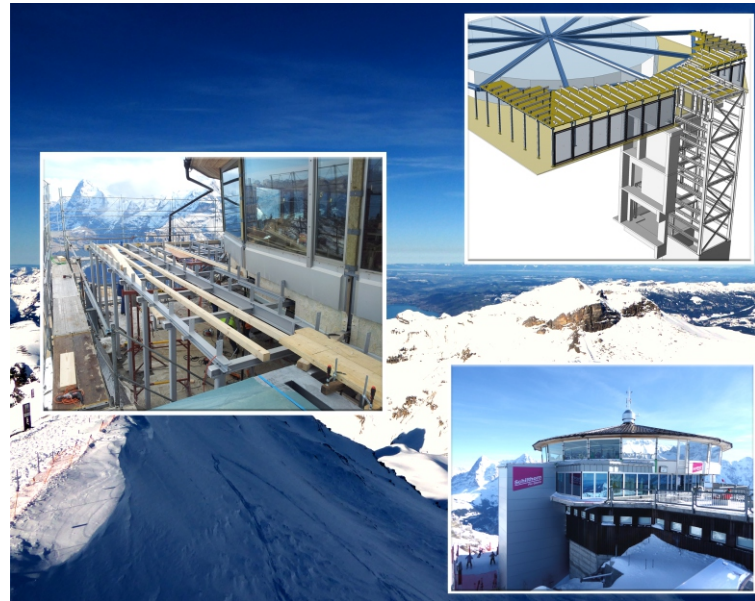
UNLIMITED PERFORMANCE

## KUNDENERFOLGE

can send these files automatically to our plasma cutting plant”, Roland Gerber continues

### **Stauffer Metallbau AG**

An exciting HiCAD project is carried out by the Stauffer Metallbau AG. The strength of the company based in Gwatt lies in the planning and production of steel engineering constructions and metal engineering constructions. Already for their first project with HiCAD they have set their sight high, more specifically at a height of 2970 metres. With a view of the spectacular Swiss Skyline the façade and roof cladding of the Piz Gloria restaurant has been renewed. Not a problem for the company with expertise in the planning and production of steel and metal engineering constructions. “However, the prerequisite was the use of a CAD solution on which you can rely, even with complex drawings”, says Fredy Steiner, chief executive of Stauffer Metallbau AG. “With HiCAD we have found a spot-on system for realising our mixed constructions with steel engineering, metal engineering and sheet metal.” This challenge was easily mastered by HiCAD for the Piz Gloria project. From glazing the facade over installing beams to the sheet metal elements for the roof expansion – all could be realised with only one system. For drawing and installing windows, doors



With a view of the Swiss Skyline the facade and roof cladding of the Piz Gloria restaurant at the Schilthorn has been renewed (Image: Stauffer Metallbau AG)

and facades the Stauffer AG relies on LogiKal® by Orgadata. “Via the interface we can access the entire LogiKal® library from HiCAD. The data exchange happens automatically and in real time”, states Fredy Steiner.

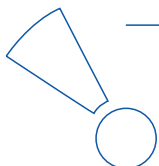
### **Blaser Metallbau AG**

The core competencies of the Blaser Metallbau AG are metal construction and glass construction. The company from Andelfingen excels due to 50 years of industry experience and an uninterrupted performance range, from the planning, over the drawing to the production and installation. 2014 the company switched to the CAD solution of the ISD Group. In comparison to exclusively parametric systems, HiCAD creates the opportunity to model freely. Combined with the ease of use and extensive, coordinated industry solutions, HiCAD won the race. “With HiCAD we implement smaller steel structures, stairs and metal construction works as well as sheet metal and glass constructions“, explains metal

#### » IN BRIEF

##### **Stauffer Metallbau AG**

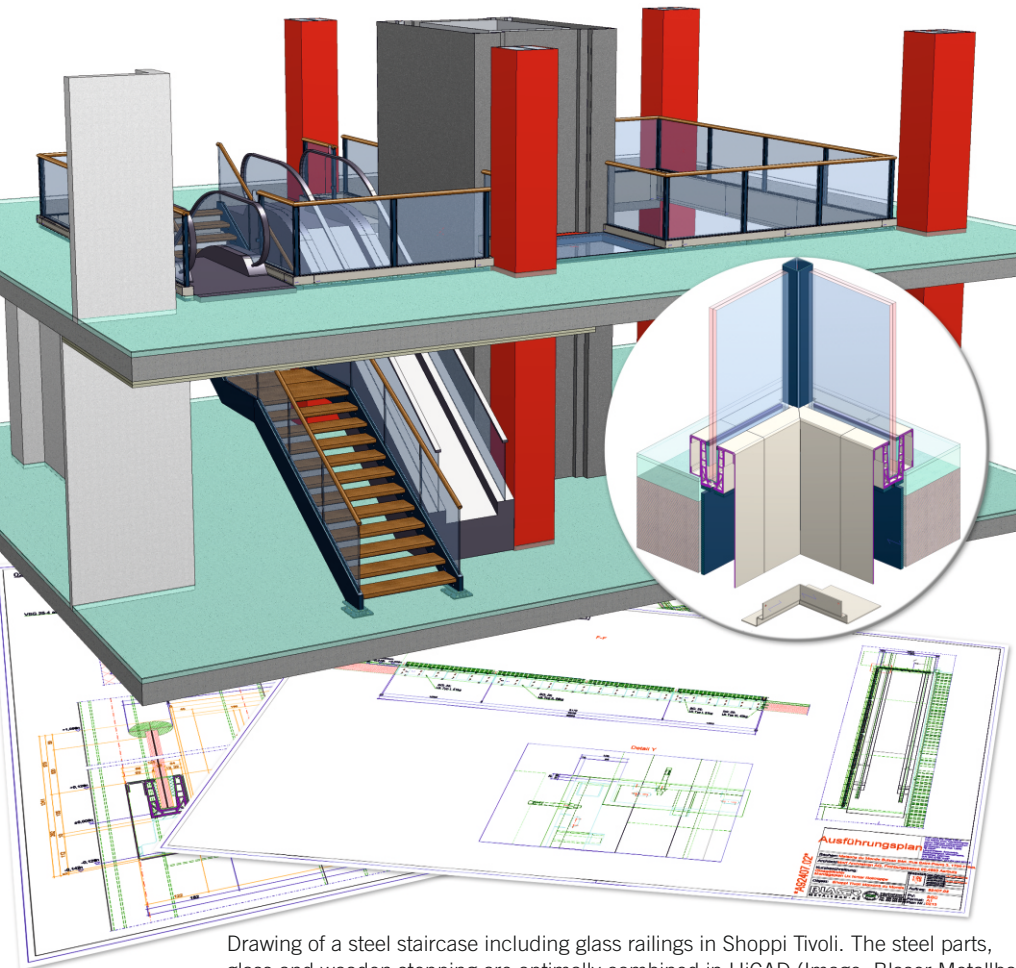
- Industry: Steel and Metal Engineering
- Software: HiCAD
- Services: Facade construction, glazing constructions, balconies, stairs, railings, and much more
- Headquarter: Gwatt, Switzerland
- [www.stauffermetallbau.ch](http://www.stauffermetallbau.ch)



UNLIMITED PERFORMANCE



## KUNDENERFOLGE



Drawing of a steel staircase including glass railings in Shoppi Tivoli. The steel parts, glass and wooden stepping are optimally combined in HiCAD (Image: Blaser Metallbau AG)

limits“ Philipp Maier enthusiastically expressed.

In the on-site Sheet Service Centre the production of sheet metal for a project. Here, HiCAD supports the sheet development and transfer to the laser machine, the automatic transfer of the sheet parameter to the bevelling machine as well as the transfer of milled parts to the CNC milling machine.

constructor Philipp Maier. “Whether to identify or to modify beams in steel engineering, to insert profiles of mullions and transoms in metal engineering or to merge and to process sheet edges – HiCAD has set no

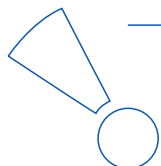
### » IN BRIEF

Blaser Metallbau AG

- Industry: Steel and Metal Engineering
- Software: HiCAD
- Services: Balconies, facades, railings, steel/glass constructions, stairs, and much more
- Headquarter: Andelfingen, Schweiz
- [www.blasermetallbau.ch](http://www.blasermetallbau.ch)

» A strong partner for your success:  
ISD Software und Systeme GmbH

☎ +49-(0)231-9793-0  
📄 +49-(0)231-9793-101  
✉ [info@isdgroup.de](mailto:info@isdgroup.de)  
🌐 [isdgroup.com](http://isdgroup.com)



UNLIMITED PERFORMANCE